

AXON MEDIA SERVER

**Rack-mount digital
media server**

True 3D graphics engine

**Ability to import 3D
object images**

**Intelligently manage digital
media files over Ethernet
from Mac or PC**

**Software built on proven
Windows® XP Embedded
and DirectX®**

**Perfect media server for
shows also using DL.2s**



The Axon Media Server, powered by the award winning DL.2 graphics engine, provides you with all the cutting edge functions of the DL.2—including Collage Generator and Curved Surface Support—with the flexibility of choosing your own output device. Axon can feed video to DL.1s, LED panels or large format projectors.

It's the flexible solution for those who already have their own video display device, and want a world of unlimited image possibilities.

Axon ships with over 1,000 stock media clips and has 200 folders for custom media clips.



Stock Content is locked down using the XP Embedded Operating System. That means all stock content is protected and consistent among all units. The XP Embedded O/S also protects Axon from drive corruption and O/S degradation over time. With the on-board content management software, you are able to move and manage the local media as well as any Axon or DL.2 on the local area network.



Axon and DL.2 use the same graphics engine DMX protocol (a HUGE bonus when programming)—they operate the same way from a DMX console or via Art-Net.

Use Axon at the Front of House area to preview content and programming for your show. Use it to pre-program DL.2 fixtures as the Axon protocol completely matches DL.2's DMX protocol. Connect another live video source (camera, DVD player) to Axon using S-Video input. So many ways to deliver!

SYSTEM

Powerful Content Management and Configuration software can remotely manage multiple Axon and DL.2 fixtures

Supports importing of custom content including: 3D objects, media files, still images

DMX512 and Art-Net support

Royalty-free stock digital art collection featuring over 1000 lighting-optimized files.

S-Video connection accepts a wide range of media device inputs

Programming compatible with DL2 fixture

Software based on Windows® XP Embedded and DirectX® technology

GRAPHICS ENGINE

Simultaneous playback of three discrete media streams on separate 2D/3D objects.

30 Object parameters for graphic control of each individual media stream including:

- A choice of multiple play modes and play speeds
- The ability to define any segment of a video loop including Scrub capability
- Multiple color mixing and visual effects that can be combined any way you choose
- Chromakey effects to layer any content by keying on any color to make transparent
- Variable Opacity to allow for crossfading or dissolves between media streams
- Full control of image Rotation, Positioning and Scaling on X, Y and Z axes
- Visual Modes let you control brightness and contrast to optimize content
- Video input or camera capture you can apply to 2D/3D objects

35 Global parameters provide graphic controls to the composite image created by up to 3 media streams

- Overall image Color Mixing applied to composite media stream image
- Color Effects including edge colors allow for combined image color mixing
- Multiple Mask selections with edge fading and strobe effects
- Edge fading for creating montages
- Keystone correction on output projection
- Viewpoint controls change viewing angle/perspective on images

Multiple modes for synchronizing all networked Axons and/or DL.2 fixtures
Magnifying effect

CONTENT MANAGEMENT APPLICATION

Runs locally and also can run remotely over network

Software now runs on Mac and PC

Communicates with DL.2 fixtures over an Ethernet network

Uploads and downloads custom digital content

Configures fixtures with remote control of all menu commands

Updates software including content, applications, and operating system

HARDWARE

3U standard rack mount

Powered by a 3.2GHZ Pentium 4 HT processor with an ATI X1900XTX Graphics Processor

Gigabit Ethernet for fast content uploading and multiple fixture synchronization

Dimensions: 18.3" x 3.5" x 20.8"
(65 mm x 89 mm x 528 mm)

Weight: 33 lbs. (15 kg)

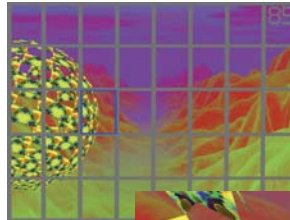
One year product warranty

New, Improved Collage Generator

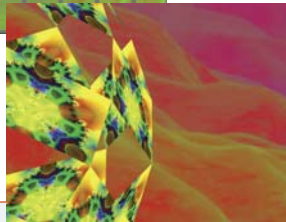
- Create seamless images from multiple Axons
- Ability to select variable number of fixtures and panorama orientations
- Synchronized playback and control of multiple units as one large single unit

This new software feature for Axon and DL.2 has been improved to offer a bigger picture with sharper images and a greater than High Definition resolution; High End has substantially increased available resolution by 4x from the previous version. Collage Generator now supports any configuration up to 8x8 arrays. Make a horizontal, vertical or central panoramic projection and increase effective screen luminance. Most panoramas can be configured in under 25 minutes.

8 X 5 PREVIEW



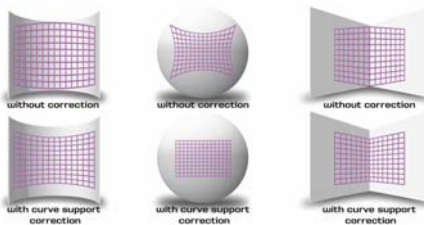
HI RES
DETAIL



Curved Surface Support

Corrects for shape distortions when projecting onto surfaces that are not flat.

- Project Axon onto convex or concave cylinders, angular screens, spheres and disk-shaped surfaces.
- Control the amount of correction needed, as well as control the vertical and horizontal center points of the image.



International and U.S. Patents approved and pending. Specifications subject to change without notice.

Certain specifications may be the result of future software releases. For a complete list of the issued patents and patents pending contact High End Systems. ©2006 High End Systems, Inc. 100106

HIGH END SYSTEMS



LIGHTING WORLDWIDE

HIGH END SYSTEMS, INC.

2105 Gracy Farms Lane • Austin, Texas 78758 USA
Austin: 1.512.836.2242 • Los Angeles: 1.818.947.0550
www.highend.com

AXON EFFECTS



ORIGINAL



FAUX LED

Faux LED

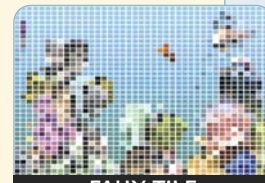
Divides image into a grid of circles to mimic an LED wall

Faux Tile

Divides image into square tiles

Drop Shadow

Creates a scalable drop shadow behind the graphic object



FAUX TILE



DROP SHADOW



ORIGINAL



CHROMA SHIFT

Chroma Shift

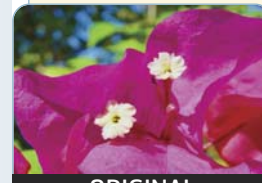
Shifts the red, blue and green component colors

Zoom Blur

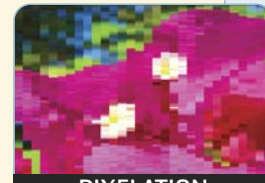
Zooms into a position on the image with a multi-image blurring effect



ZOOM BLUR



ORIGINAL



PIXELATION

Pixelation

Divides image into rectangles using center pixel color of each "box" as its color

Fuzzifier

Creates multi-image blurring effect



FUZZIFIER

ALSO:

Image Scale And Rotate
Pan and Scan
Film Roll
Shake n' Bake
Texture Rotation